



WARRIOR

*Meeting pets & their people where they are,
when they need us most.*

VOLUME 3



In a homeless encampment along a creek in south Wichita, a community of people and pets rely on each other for companionship and survival...



Their living conditions are challenging, but their dedication to their animals is undeniable.

When our vet partner pulled the mobile pet care clinic as close as possible to their encampment, we weren't just offering services—we were offering trust. The community members had noticed growing aggression in one of the male dogs and knew a litter of puppies had already arrived. They wanted better. They wanted to stop the cycle before more lives were brought into uncertainty.

Because we met them where they were—without judgment, without barriers—they showed up. They walked their dogs and ferried their cats in the back of a bike trailer. They brought their pets, one by one, knowing that we would provide the care they desperately needed. Our team provided vaccinations, veterinary exams, and spay/neuter services, ensuring that their four-legged family members would be healthier and safer. While they may not have permanent homes, they have built a network of support—both for themselves and for their pets.

What a wonderful world it would be if everyone had a roof over their head and a home in the traditional sense—but that's not always the reality. It may not be ideal, but we cannot turn our backs when there is a need. At WAAL, we believe that caring for a pet isn't about financial status or housing—it's about doing what's best for pets and their people. By making veterinary care accessible, we help people keep their pets healthy, ensuring they remain a source of comfort and companionship and with them and out of shelters.



A Message from our Board of Directors

At Wichita Animal Action League, we know that pets are more than just companions—they are family. For many people, their pets provide comfort, purpose, and unconditional love. That's why we are committed to ensuring that every pet receives the care they need, regardless of their owner's financial situation or living conditions.

Through community partnerships and because of the generosity of supporters like you, we are able to meet people where they are and provide compassionate, high-quality care. Whether it's a senior struggling to afford medical treatment for their beloved pet or someone experiencing homelessness who wants to prevent another litter of puppies, we are here to help. We believe that no one should have to choose between their own well-being and the health of their pet.

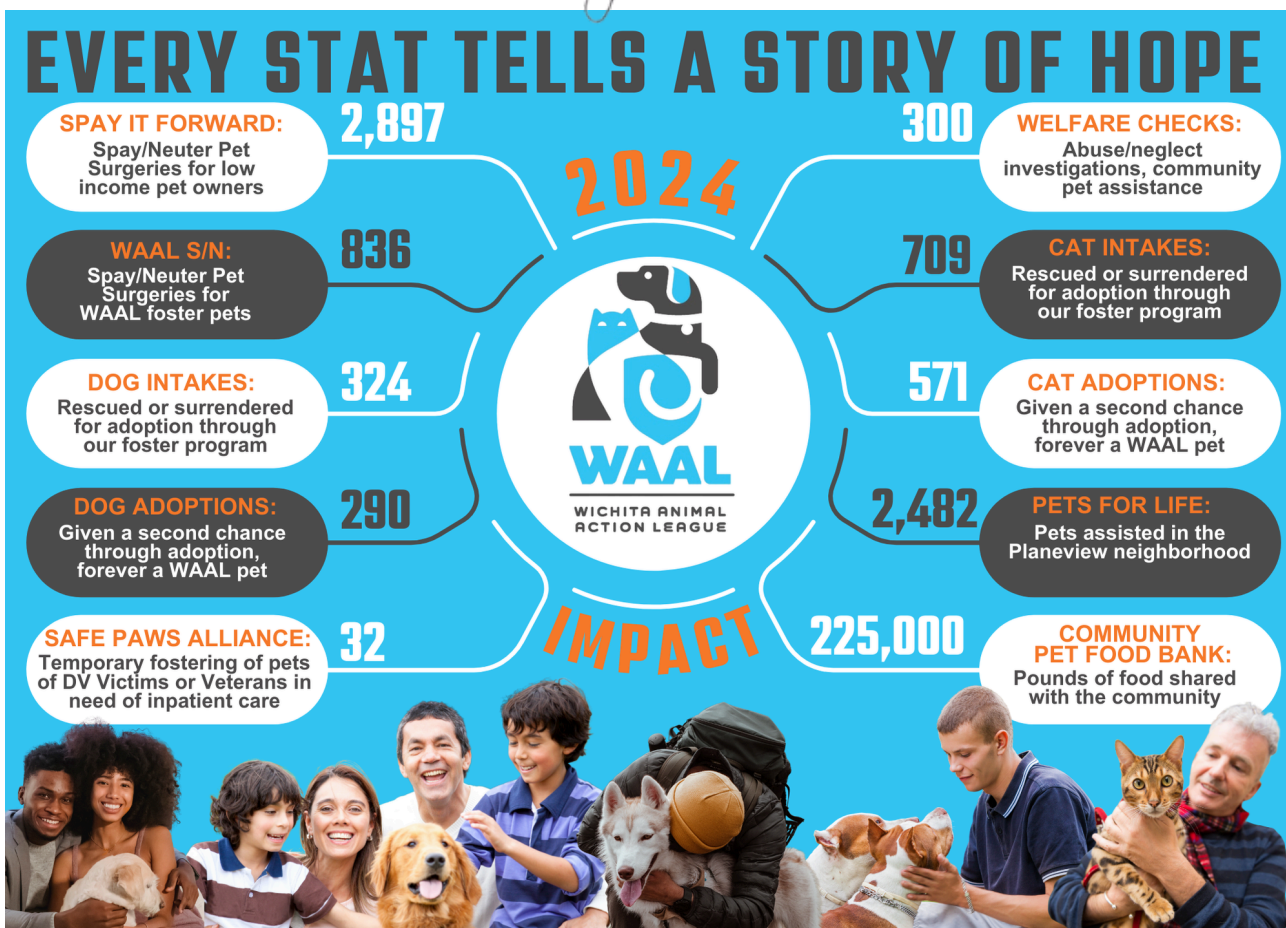
As you look below at the incredible impact we've made together in 2024, it's clear that every number represents a life changed—a pet saved, a family supported, a crisis averted. These statistics aren't just figures; they are stories of hope, resilience, and compassion. Thanks to your generosity, we continue to grow, reaching more pets and people in need.

With your continued support, we can reach even more pets and people in need. Every donation, every volunteer hour, and every shared story makes a difference. Looking forward, there will be even more opportunities for us to save lives together—through expanded programs, new outreach initiatives, and community-driven solutions that ensure no pet is neglected.

Thank you for being part of this lifesaving mission.

Julia A. Craft

Julia Craft
Board President



Love for Lucy

When Lucy's sweet owner first met her, she couldn't turn away. The tiny dog had been living in heartbreaking conditions—kept in a birdcage in a bathroom while her previous owner worked long hours. The thought of Lucy spending her days confined like that was unbearable, so she opened her heart and home, offering Lucy the love and care she deserved.

Rescuing Lucy gave her new owner more than just a companion—it gave her purpose. Every wag of Lucy's tail, every soft nuzzle, and every shared moment reminded her that they were saving each other. But when Lucy needed critical dental care, the cost was overwhelming. Unsure where to turn, she placed her trust in WAAL.



Senior pets often face unique challenges—like Lucy, they may require specialized care as they age. For their owners, the cost of treatment can sometimes be a barrier to providing the necessary care. That's where WAAL comes in. Thanks to our partnership with Pets for the Elderly and additional grant funding through our Affordable Local Pet Health Assistance (ALPHA) program, we are able to offer support that ensures senior pets like Lucy get the treatment they need without putting unnecessary strain on their owners.

For many seniors, their pets are more than just companions—they are lifelines. They offer unconditional love, comfort, and a sense of security, helping combat loneliness and providing a reason to get out of bed each day. If you know a senior who may be struggling with the challenges of aging and loneliness, consider the profound difference a senior pet could make. Senior pets make wonderful companions—they're often calm, loving, and ready to provide a sense of fulfillment to their new owners. They can be the perfect match for someone in need of a furry friend who can offer love without the high-energy demands of a younger animal.

At WAAL, we're proud to help seniors care for their pets through accessible veterinary care. We believe that the love and companionship between a senior and their pet should never be compromised by financial constraints. With your support, we can continue to extend our reach.



PETS *for*
THE ELDERLY



A Princess for Patty

Patty lives in a homeless encampment, and Princess is her lifeline. When asked where she got Princess, she was so overcome with emotion that she couldn't tell the story. All she could say, through tear-filled eyes, was that Princess had saved her.

Like many pets in similar situations, Princess had never been vetted or spayed. She had recently given birth, and friends in the encampment were helping care for her puppies. When the time came for Princess and her puppies to be spayed and neutered, Patty was understandably nervous.

Handing over the one constant in her life—the one soul who had never left her side—was terrifying. And Princess, ever attuned to Patty's emotions, picked up on her fear, becoming anxious and agitated.

Even though the care was being provided in a veterinary trailer through one of our trusted partners, WAAL's team would not change the standard of care we owed to both Princess and Patty. We took the time to reassure Patty, to show her that Princess was in the best hands possible. Only when they were both calm and comfortable did we proceed with care.

We believe that every pet deserves high-quality care, no matter where they live or where treatment takes place. Whether in a state-of-the-art clinic or a mobile unit in a parking lot, we provide the same compassionate, expert-level treatment. Because every pet—and every person who loves them—deserves dignity, respect, and the peace of mind that their trusted companion is safe.



At WAAL, growth isn't just about numbers—it's about deepening our impact, strengthening relationships, and earning the trust of those we serve. Every pet we rescue, every family we support, and every program we expand is built on a foundation of compassion and connection. As we continue to grow, we remain committed to building meaningful relationships—with pet owners, our community, and generous supporters like you—because lasting change happens when we work together. Thank you for being part of this journey. With your help, we're not just saving lives—we're creating a future where every pet and person knows they can count on WAAL.

If you're inspired to get more involved, we'd love to connect with you! Email me to learn how you can make an even greater impact and be part of the lifesaving work we do every day.

WAAL

Christy Fischer
Executive Director
christy@waalrescue.org

Christy